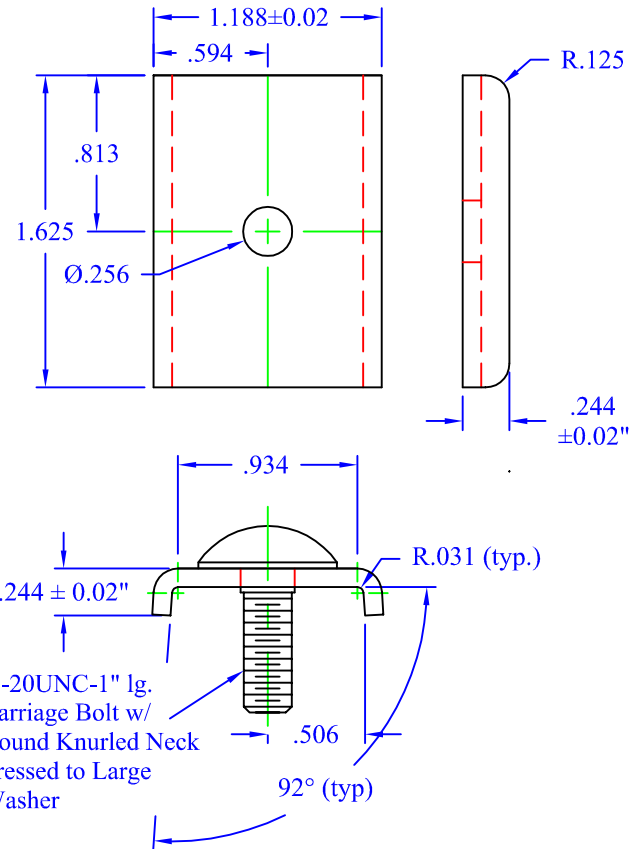
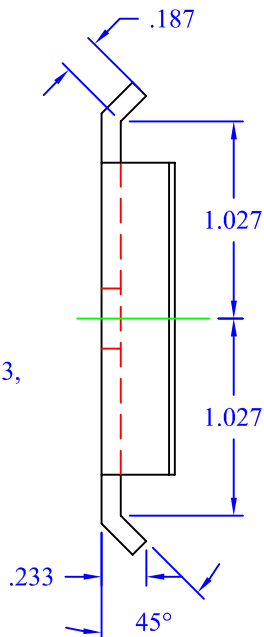


Outer Washer



Inner Washer

General Notes:

- 1) Material:
 - A) Black Carbon Steel
Comermercial Quality HRPO
Steel Per ASTM A569
Electroplated After Fabrication
Per ASTM B633 (SC1)
 - a. Silver Zinc
 - b. Black Zinc
 - B) Stainless 316L
- 2) Dimensional Tolerances
 - A) General: $\pm .02$ "
 - B) Angularity: $\pm 2^\circ$
- 3) All Units Inches
- 4) Material Thickness (MIN): 12 GA. = $.0966$



This drawing in design and detail is the property of WBT, LLC. and must not be used except in connection with our work. All rights of design or invention are reserved.

PART # OR NAME				DRAWN BY	
Double Splice				RJM	
SIZE	DATE	SCALE	SHEET	REV	
A	4/25/17	VARIES	1 OF 1	X	