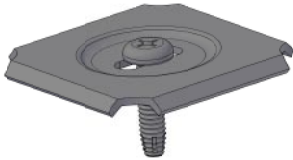


UNDERFLOOR C BRACKET



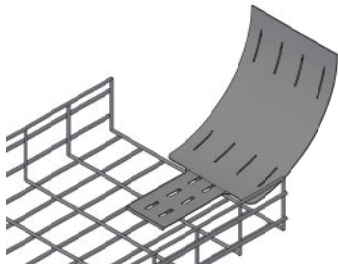
PART NUMBER	DESCRIPTION	WT. per box	QUANTITY per box
WBTU6C	Multi-tier C bracket used to support 2nd tier of 6" wide tray underfloor.	2 lbs	1 each
WBTU12C	Multi-tier C bracket used to support 2nd tier of 12" wide tray underfloor.	4 lbs	1 each

GROUND/HOLD DOWN



PART NUMBER	DESCRIPTION	WT. per box	QUANTITY per box
WBTUGHD	Ground/hold down method used with underfloor tray.	7 lbs	50 sets

VERTICAL UP



PART NUMBER	DESCRIPTION	WT. per box	QUANTITY per box
VERTICAL UP	The Vertical Up is used when transitioning cabling up from a raised computer floor.	1.75 lbs	1 each