

### CENTER SUPPORTS



PART NUMBER	DESCRIPTION	WT. per pc.	QUANTITY per box
CENTER SUPT 4	Center Support for 4" wide tray.	1.6 lbs	1 each
CENTER SUPT 6	Center Support for 6" wide tray.	1.8 lbs	1 each
CENTER SUPT 8	Center Support for 8" wide tray.	2 lbs	1 each
CENTER SUPT 12	Center Support for 12" wide tray.	2.7 lbs	1 each
CENTER SUPT 16	Center Support for 16" wide tray.	3.3 lbs	1 each
CENTER SUPT 18	Center Support for 18" wide tray.	3.4 lbs	1 each
CENTER SUPT 20	Center Support for 20" wide tray.	3.8 lbs	1 each
CENTER SUPT 24	Center Support for 24" wide tray.	4.4 lbs	1 each

STANDARD FINISH: ZINC PLATED | AVAILABLE IN FINISHES: **BL, PW, CPC**, 

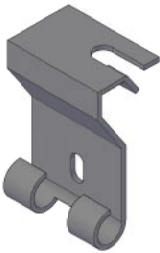
### CEILING SUPPORTS



PART NUMBER	DESCRIPTION	WT. per pc.	QUANTITY per box
CEILING SUPT 12	Profile style support for 12" wide tray & smaller.	1.1 lbs	1 each
CEILING SUPT 16	Profile style support for 16" wide tray.	1.5 lbs	1 each
CEILING SUPT 18	Profile style support for 18" wide tray.	1.6 lbs	1 each
CEILING SUPT 20	Profile style support for 20" wide tray.	1.9 lbs	1 each
CEILING SUPT 24	Profile style support for 24" wide tray.	1.9 lbs	1 each

STANDARD FINISH: ZINC PLATED | AVAILABLE IN FINISHES: **BL, PW, CPC**, 

### TRAPEZE SUPPORTS



PART NUMBER	DESCRIPTION	WT. per pc.	QUANTITY per box
TRAP SUPT	Trapeze style side support attaches to the side of the tray; suggested for tray sizes 16" wide & smaller.	9 lbs	50pcs/box

STANDARD FINISH:  | AVAILABLE IN FINISHES: **BL, PW, CPC**

 = PRE-GALVANIZED FINISH