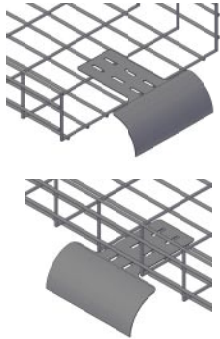


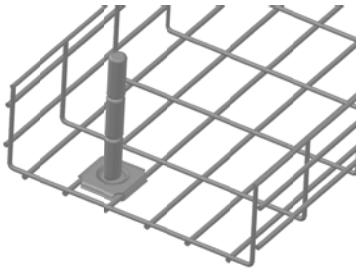
VERTICAL DOWN



PART NUMBER	DESCRIPTION	WT. per pc.	QUANTITY per box
VERTICAL DOWN	Use the vertical down when dropping cables from the end or the side of tray.	1.5 lbs	1 each

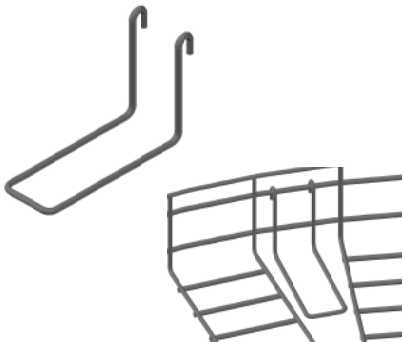
STANDARD FINISH: ZINC PLATED | AVAILABLE FINISHES: **BL, PW, CPC**

CABLE GUIDES



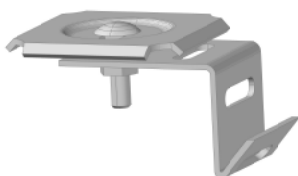
PART NUMBER	DESCRIPTION	WT. per pc.	QUANTITY per box
CABLE GUIDE	The cable guide is used to maintain cable bend radius when routing or pulling cables through fittings.	1 lb	1 each

FITTING ATTACHMENT



PART NUMBER	DESCRIPTION	WT. per pc.	QUANTITY per box
FITTING ATTACHMENT 2	Use the fitting attachment 2 to fill the gap in 2" tray when creating fittings.	1 lb	1 each
FITTING ATTACHMENT 4/6	Use the fitting attachment 4/6 to fill the gap in 4" or 6" tray when creating fittings.	1 lb	1 each

RACK ATTACHMENT



PART NUMBER	DESCRIPTION	WT. per pc.	QUANTITY per box
RACK ATTACHMENT	Attaches tray directly to the top of a standard rack.	1 lb	1 kit

STANDARD FINISH: ZINC PLATED | AVAILABLE FINISH: **BL**