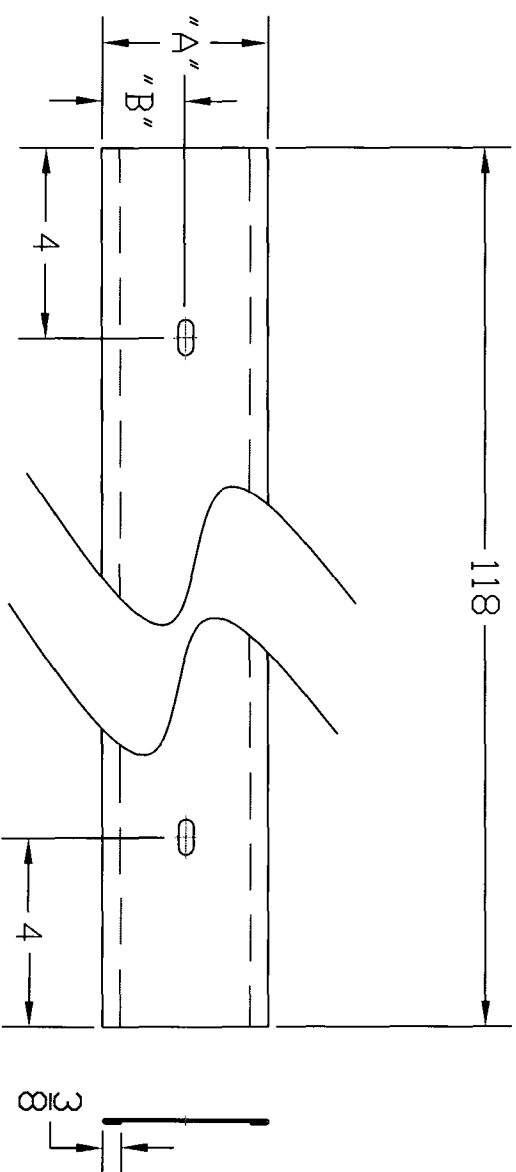


Tray Width	"A" Formed width	"B"	Shear width
4 wide	3 7/16	1 23/32	4 3/16
6 wide	5 7/16	2 23/32	6 3/16
8 wide	7 7/16	3 23/32	8 3/16
12 wide	11 7/16	5 23/32	12 3/16
16 wide	15 7/16	7 23/32	16 3/16
18 wide	17 7/16	8 23/32	18 3/16
20 wide	19 7/16	9 23/32	20 3/16
24 wide	23 7/16	11 23/32	24 3/16

REVISIONS				
ZONE	REV	DESCRIPTION	DATE	APPROVED



**General Notes:**

- 1) Material:
  - A) Commercial Quality mill galv steel per ASTM A653 & A924 w/ G-90 Coating
  - Min Yield= 33 KSI
- 2) Dimensional Tolerances
  - A) General: ± 1/16"
  - B) Slot Location: ± 1/32"
- 3) All Units Inches
- 4) Material Thickness (NDM): 18 GA. GALV. = .0516

<b>WBT</b> <sup>LLC</sup>		Solid Bottom	
CN	SCALE	SHEET	REV
SIZE	FSCM NO.	DWG NO.	REV