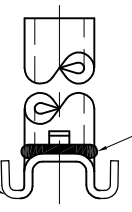
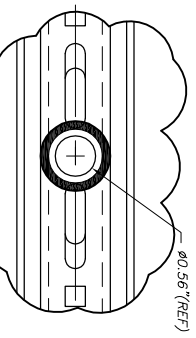
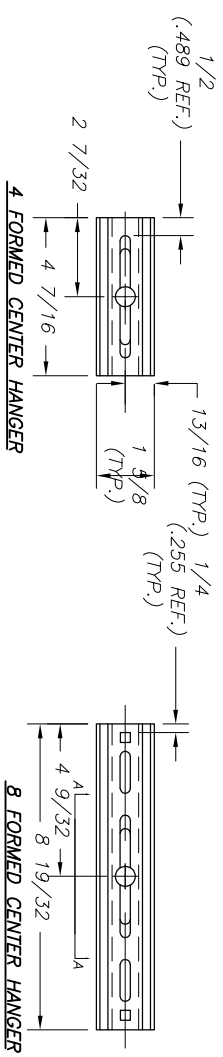


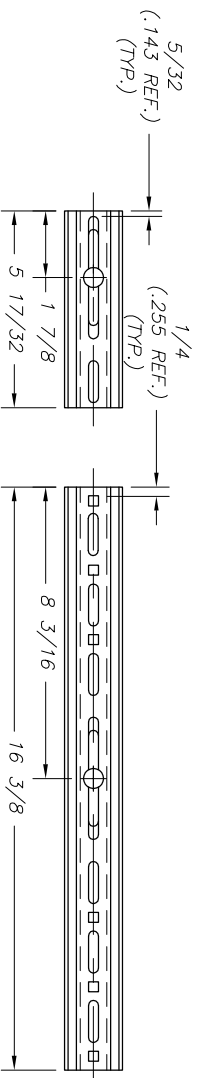
PROFILE & PIPE TO BE WELDED AT ALL POINTS OF CONTACT



PROFILE CROSS SECTION (SEE NOTE #4)

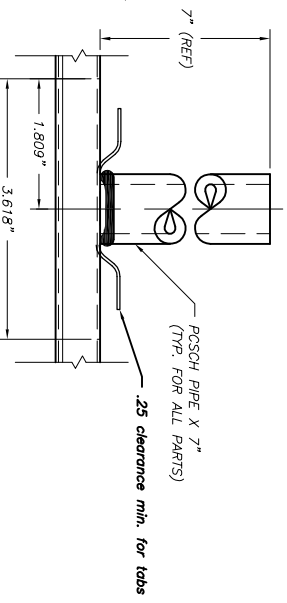


4 FORMED CENTER HANGER

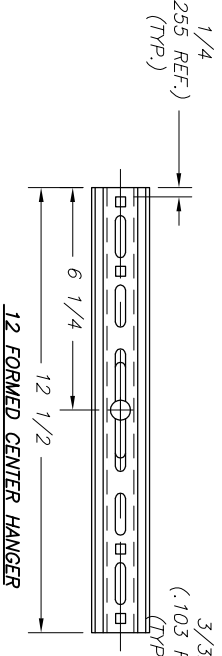


6 FORMED CENTER HANGER

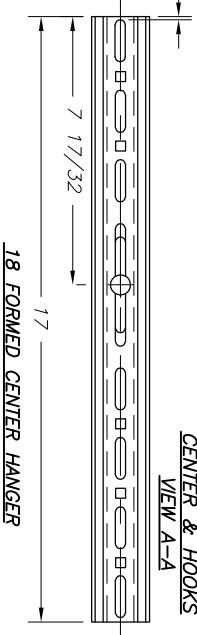
16 FORMED CENTER HANGER



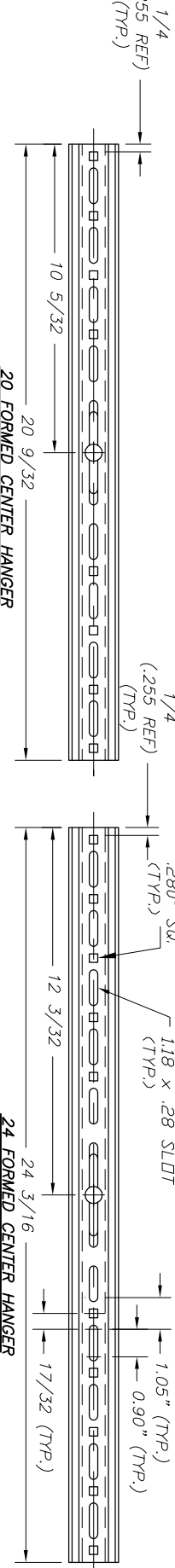
TYP. FRONT VIEW OF CENTER & HOOKS VIEW A-A



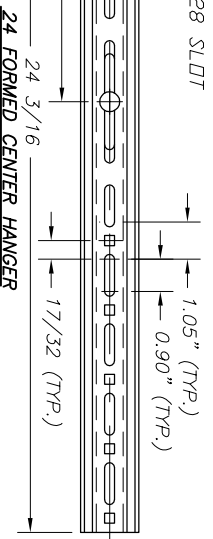
12 FORMED CENTER HANGER



18 FORMED CENTER HANGER



20 FORMED CENTER HANGER



24 FORMED CENTER HANGER

- GENERAL NOTES:  
 1) MATERIAL TO BE COMMERCIAL QUALITY MILL GALVANIZED STEEL PER ASTM A653 & A924 W/G-90 COATING  
 2) DIMENSIONAL TOLERANCES:  
 A) GENERAL XX = ±.03  
 XXX = ±.01  
 B) ANGULAR LOCATION = ±1/32  
 C) HOLE LOCATION = ±1/32  
 3) MATERIAL THICKNESS (NOM)  
 16 GA. = .063  
 4) PROFILE CROSS-SECTION SAME AS 1 5/8"  
 5) PIPE TO BE 90° TO PROFILE CHANNEL.  
 6) AFTER ASSEMBLY A 1/2" THREADED ROD MUST BE ABLE TO FREELY PASS THROUGH THE INSIDE OF THE PSCOH PIPE AND PROFILE CHANNEL AFTER FABRICATION.  
 7) ALL WELDS TO BE PER A.W.S. D1.3  
 8) TABS TO BE TOUCHED UP WITH BRIGHT ZINC RICH PAINT.  
 9) TAB MUST ACCEPT (5mm) AND (6mm) WIRE.

**WBT** LLC

Center Support

CN

SIZE	Date	REV.	REV
A	2-6-09	Revision 1	
SCALE	SHEET		

This drawing in design and detail is the property of WBT, LLC, and must be used except in connection with our work. All rights of design or invention are reserved.